

# Secures a longer service life for your engine



## MAINTAIN GASOLINE PLUS – High performance gasoline additive concentrate

### Area of application

The concentrate cleans the entire fuel system then keeps it clean. This includes the fuel tank and lines, the injector nozzles and also the combustion chamber itself where both the air intake and valves are kept clean. This protects the engine and can help save fuel.

### Advantages

- Excellent removal of deposits
- Prevents formation of new deposits
- Excellent corrosion protection
- Excellent water separation
- Metal-free and ash-free technology
- Burns away without any residue
- Gentle on catalytic converters
- Suitable for use with all standard commercial gasoline fuels
- For gasoline fuels up to E20
- Maintains engine output
- Ideal for continuous use

### Application

Add 0.25 litres of the concentrate per 60 liters of gasoline when filling your tank. Please avoid adding too much concentrate.

### Packaging unit

Available in a box with 40 x 0.25-litres cans, including funnel filler.

### Suitable for all gasoline engines with:

- Intake-manifold fuel injection
- Direct injection
- Carburettor
- 2-stroke engines



### ▪ MAINTAIN GASOLINE PLUS

Super High Performance gasoline additive concentrate for cleaning the fuel and intake system. Recommended for continuous use.

# The effect of MAINTAIN GASOLINE PLUS

Valve seat without ...



... with MAINTAIN GASOLINE PLUS



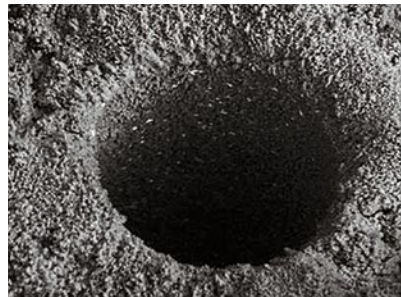
Inlet valve without ...



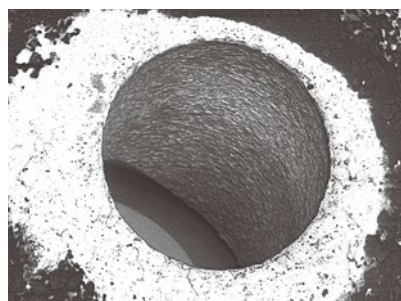
... with MAINTAIN GASOLINE PLUS



Injection nozzle without ...



... with MAINTAIN GASOLINE PLUS



## FAQs

### Are the deposits removed immediately?

No, they are „washed away“ gradually.

### Where do the deposits go when they have been removed? Do they end up in the engine oil?

No, all deposits are removed from the engine together with the exhaust gas, for example due to combustion.

### Can the additive cause the catalytic converter to get clogged or even damaged?

No, the additive is combusted and does not leave any residue. The product will not have any negative impact on the catalytic converter. If your car is fitted with a particulate filter, this will also be fine.

### What should I do if I have added too much of the concentrate to my tank?

Simply add an appropriate volume of fuel to compensate for this and establish the optimum mix. In many cases, just a short drive and subsequent fuel top-up is sufficient.

### How does the additive mix with the fuel?

The product is self-mixing. Simply pour the concentrate into your tank before filling with gasoline. The additive will still mix with the fuel even if you add it to a full tank of gasoline, although will then take slightly longer to achieve the optimum mix. However, this ultimately has no impact on performance.

## FUCHS SCHMIERSTOFFE GMBH

Friesenheimer Straße 19  
68169 Mannheim/Germany  
Phone: 0621 3701-0  
Fax: 0621 3701-7000

E-Mail: [zentrale@fuchs-schmierstoffe.de](mailto:zentrale@fuchs-schmierstoffe.de)  
[www.fuchs.com/de/en](http://www.fuchs.com/de/en)

## Export Division

Friesenheimer Straße 19  
68169 Mannheim/Germany  
Phone: +49 621 3701-1713  
Fax: +49 621 3701-7713

E-mail: [export@fuchs-schmierstoffe.de](mailto:export@fuchs-schmierstoffe.de)  
[www.fuchs.com/de/en](http://www.fuchs.com/de/en)